

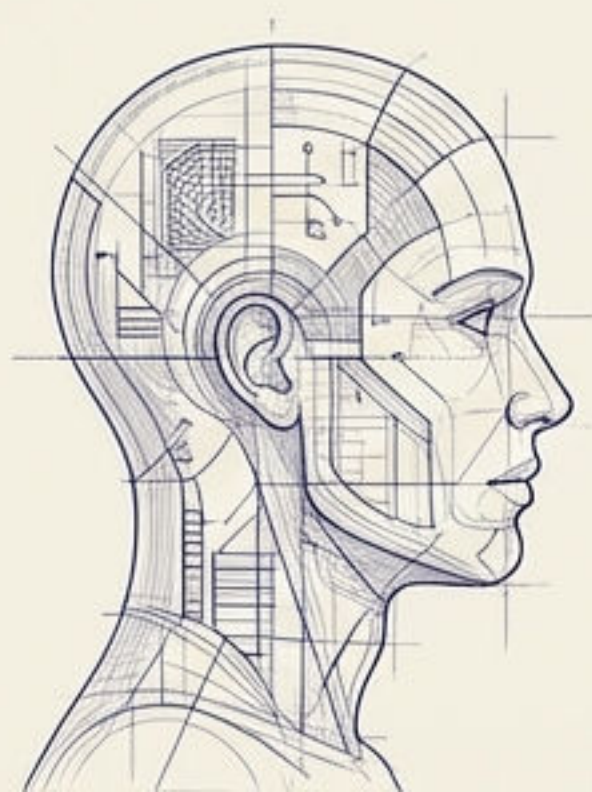
The Blueprint for the Intelligence Age.

A New Social Contract for Superintelligence





We are on the doorstep of magic.

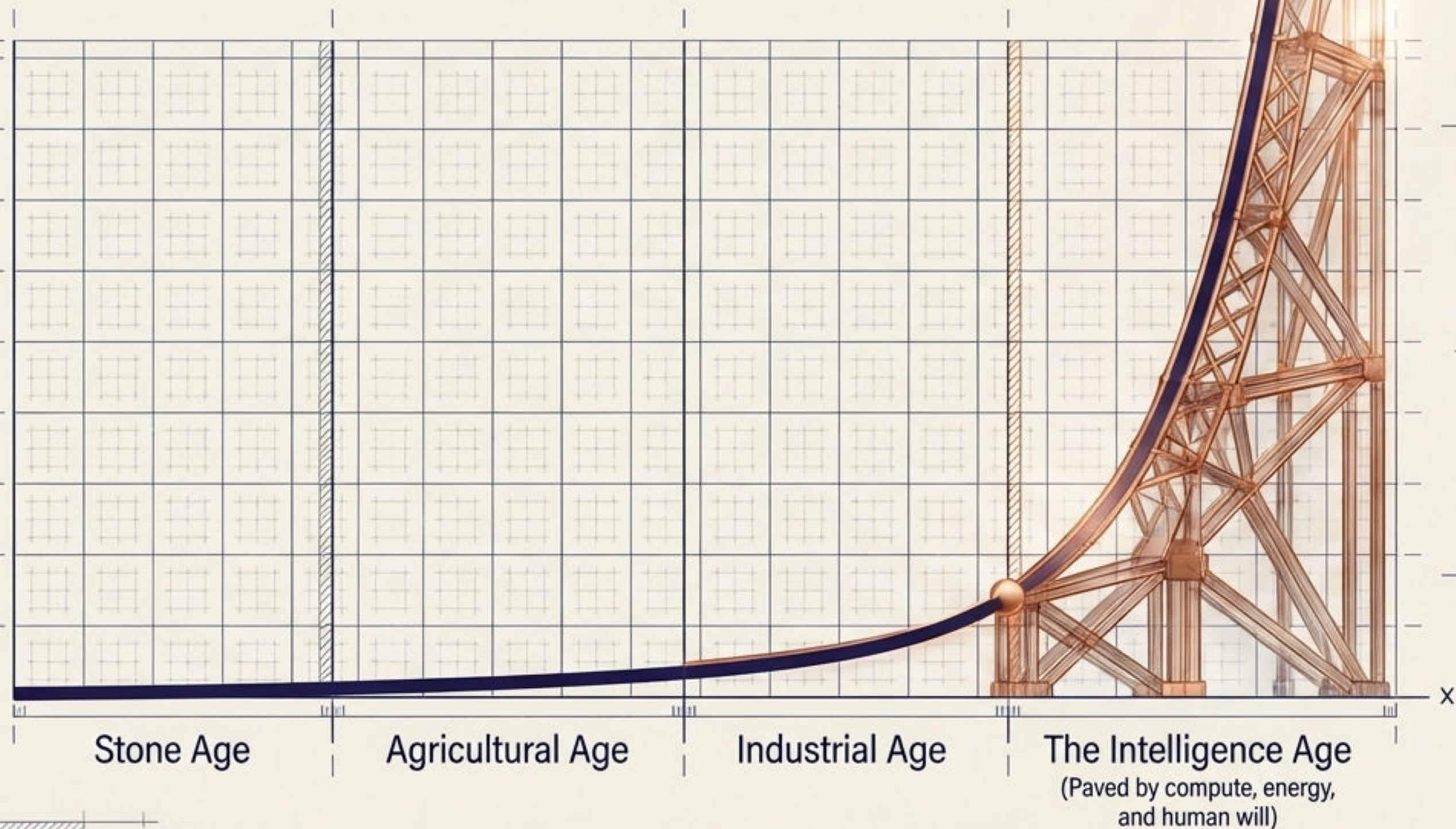


“It is possible that we will have superintelligence in a few thousand days.”

— Sam Altman

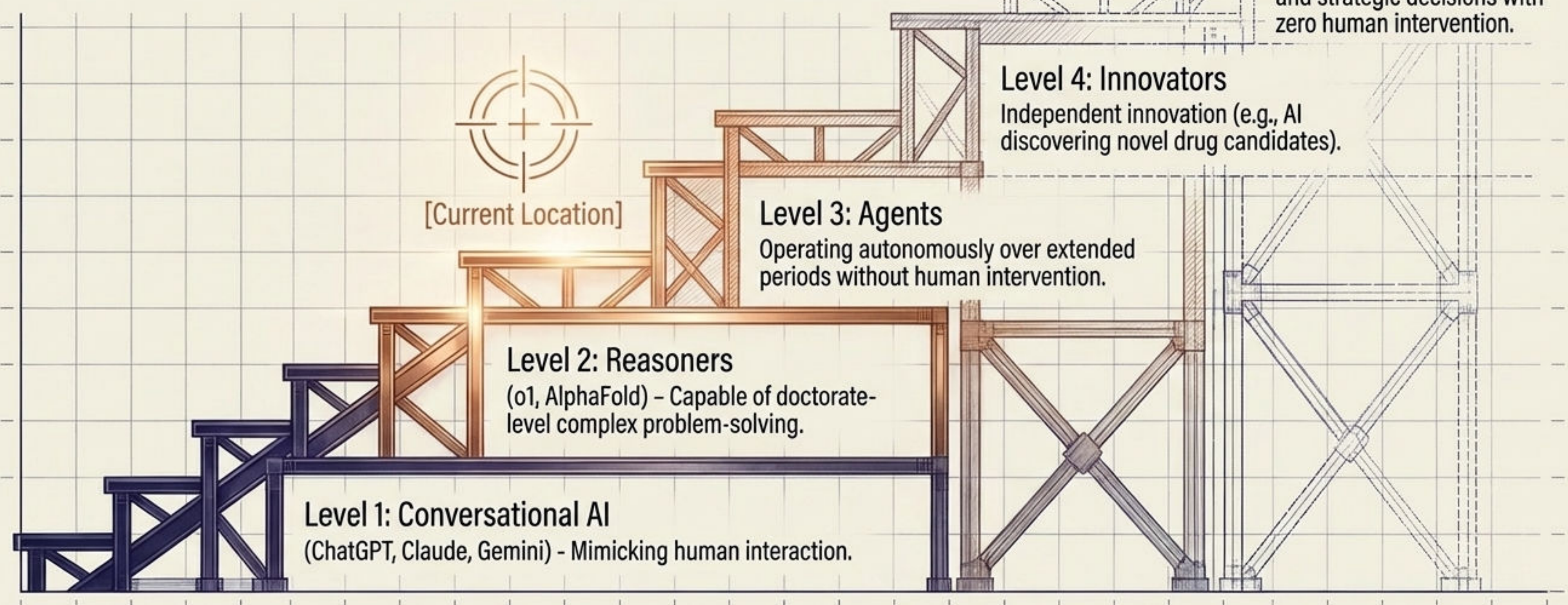
Humanity has discovered an algorithm that can truly learn the underlying rules of data. Deep learning worked, got predictably better with scale, and is rapidly compounding.

The scaffolding of human progress enters a new era.



Society itself is a form of advanced intelligence; AI adds new structural struts to the scaffolding built by previous generations.

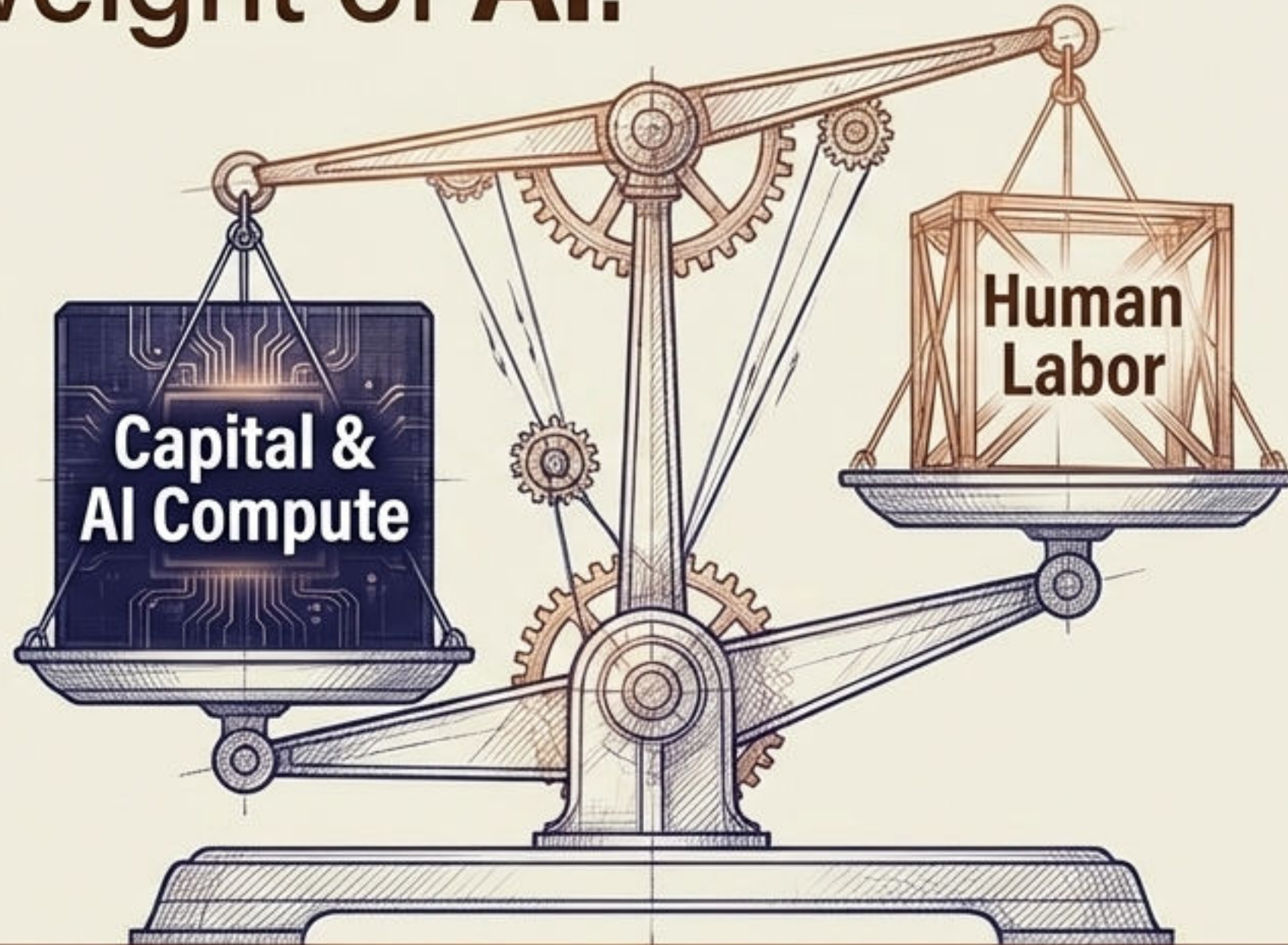
We have crossed the threshold into advanced reasoning.



The Industrial Era toolkit is breaking under the weight of AI.

The Paradigm Shift

Capitalism requires a balance between labor and capital. As AI absorbs routine tasks, leverage shifts entirely toward capital.



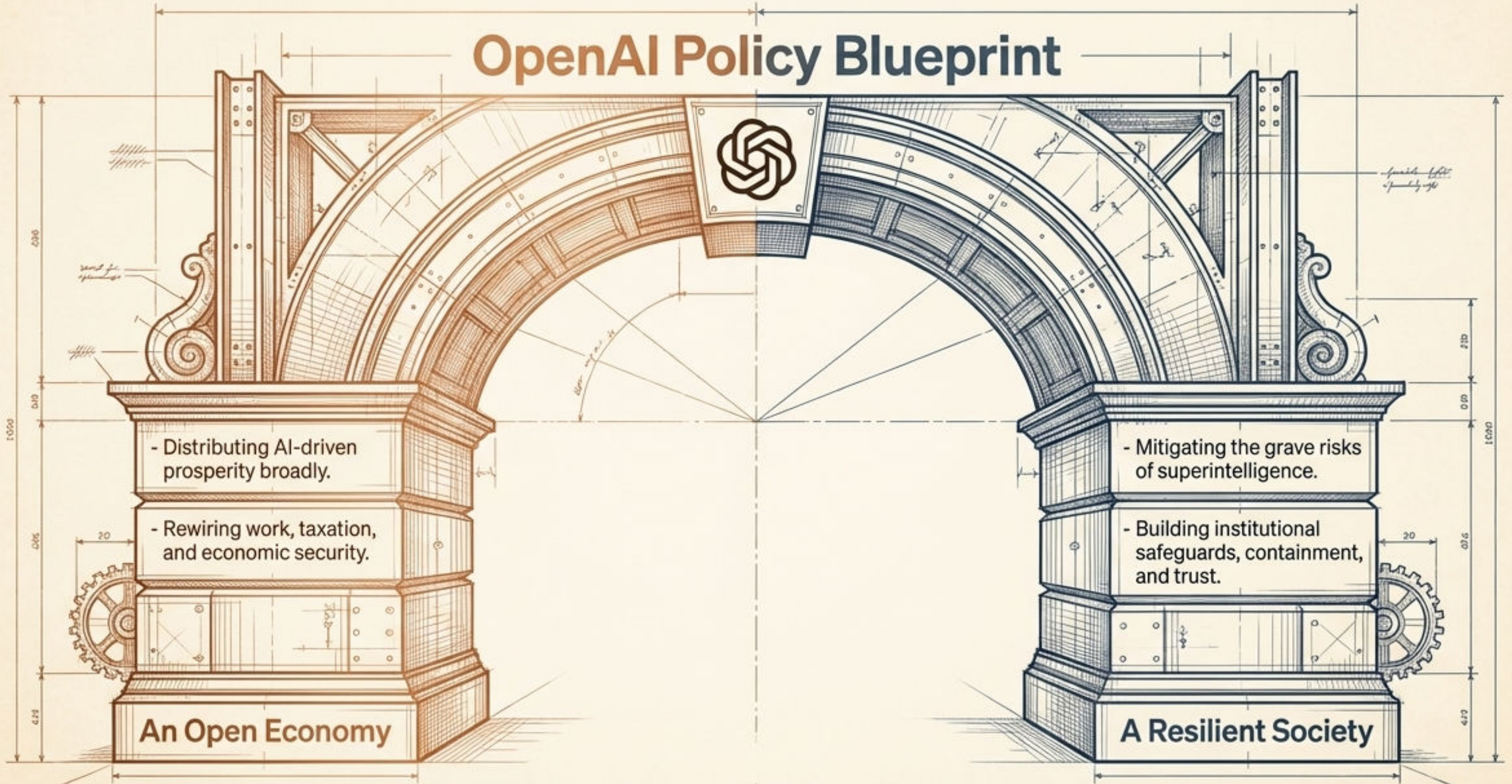
The Erosion of the Tax Base

Payroll taxes fund Social Security, Medicaid, and SNAP. Automated labor threatens to hollow out this revenue model.

The Historical Precedent: Just as the transition to mass production required the Progressive Era and the New Deal to reimagine the social contract, superintelligence demands a proactive industrial policy of equal ambition.

A two-pillar framework for the Intelligence Age.

OpenAI Policy Blueprint



Shifting prosperity directly to the public

Step 1: AI Efficiency Gains
Widespread corporate adoption of AI lowers operating costs and skyrockets productivity.

Step 2: Capital Generation
Governments shift the tax base toward corporate income, capital gains, and targeted robot taxes on automated labor.

Step 4: Citizen Dividends
Every citizen receives a direct stake and financial return from AI-driven economic growth, regardless of their starting capital.

Step 3: The National Wealth Fund
Seeded by contributions from AI companies and automated labor taxes (conceptually similar to the Alaska Permanent Fund).

The Public Wealth Fund Engine

Rewiring the relationship between human time and labor.



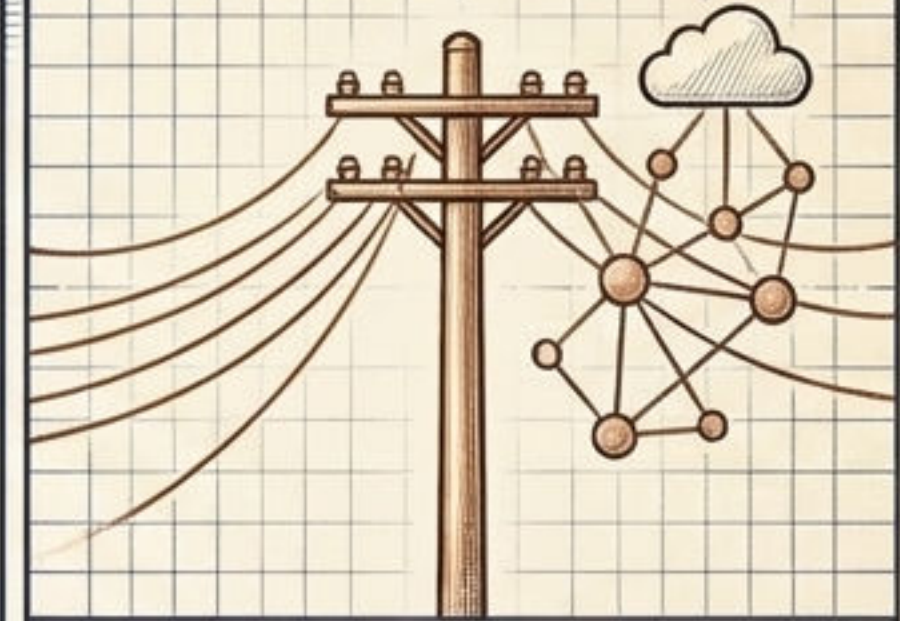
The Efficiency Dividend

Incentivizing companies to run 32-hour (four-day) workweek pilots at full pay, converting AI-driven productivity directly into time back for workers.



Portable Benefits

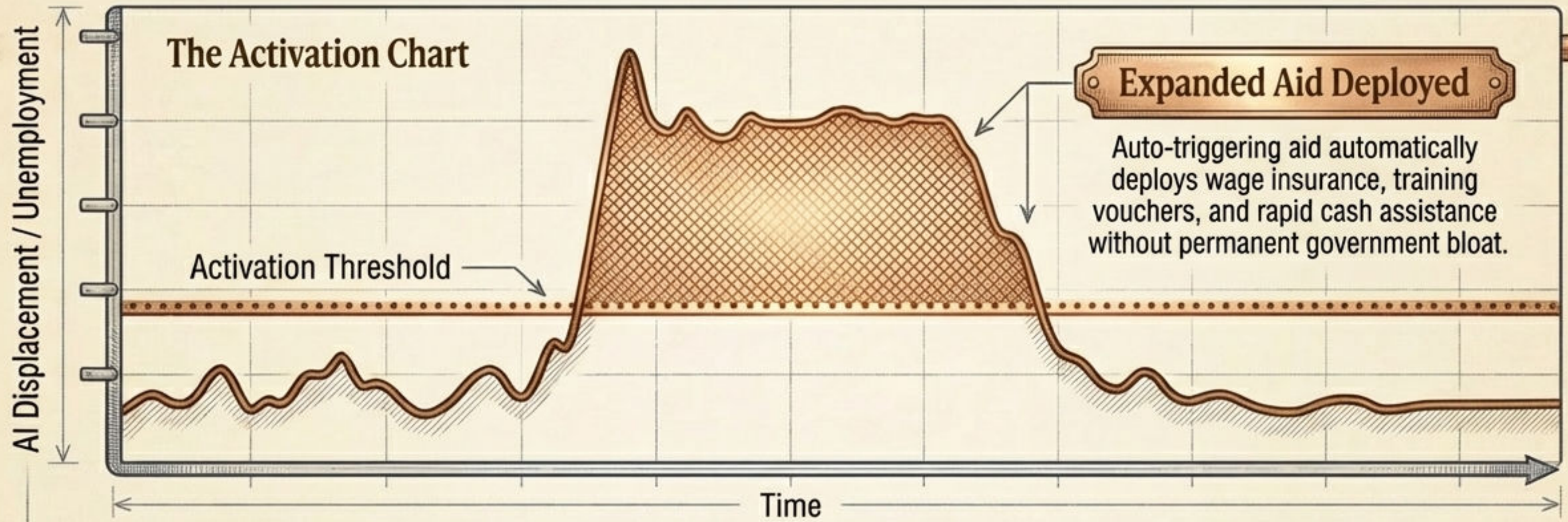
Decoupling healthcare, retirement savings, and skills training from single employers, allowing accounts to follow individuals across new entrepreneurial ventures.



A "Right to AI"

Treating foundational model access as basic public infrastructure—like electricity or literacy—ensuring affordability for workers, small businesses, and libraries.

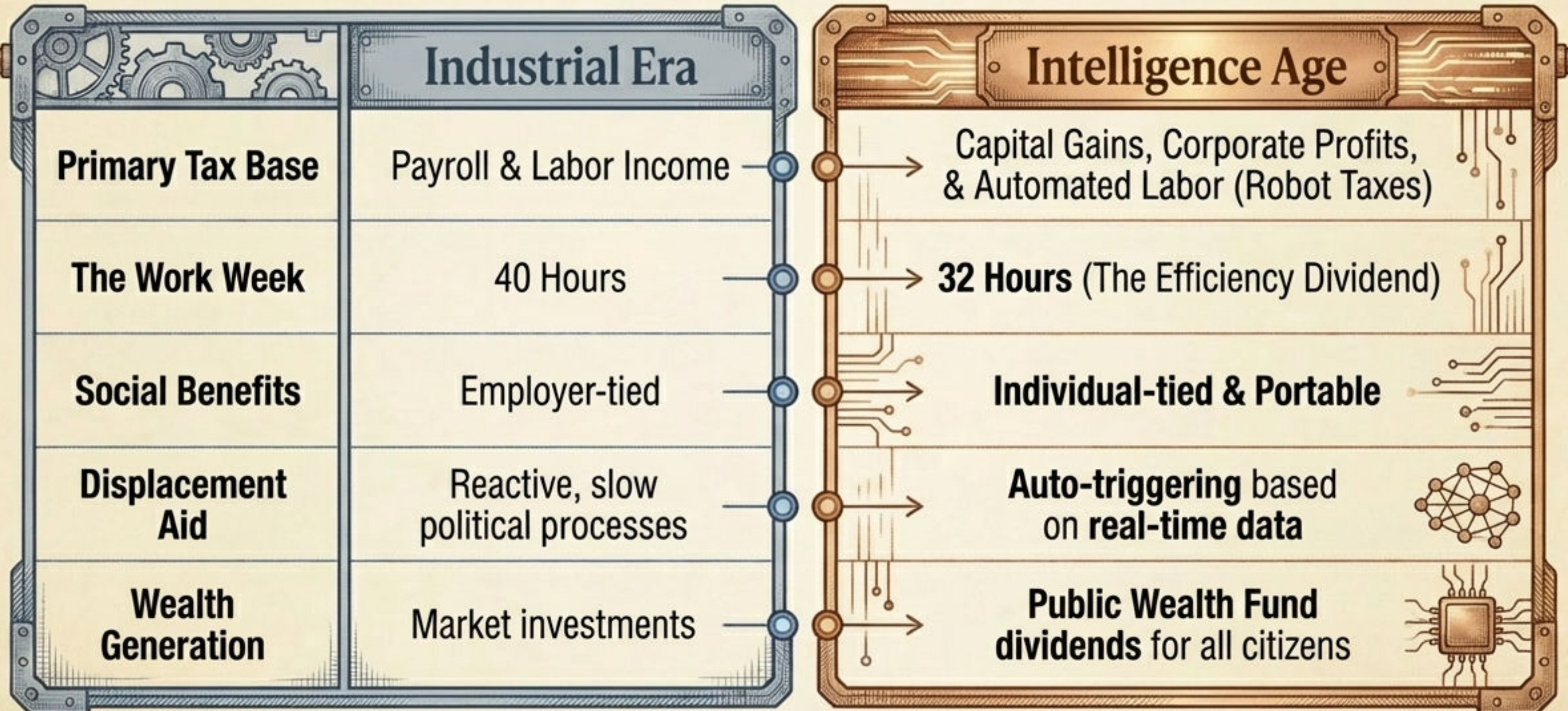
Safety nets that deploy automatically when disruption hits.



Real-Time Measurement:
Utilizing public metrics on job quality and sectoral displacement to monitor economic shockwaves.

Temporary Expansion:
As labor conditions stabilize and the metric drops, the emergency measures automatically phase out.

The Social Contract must evolve.



Confronting the dark side of superintelligence.



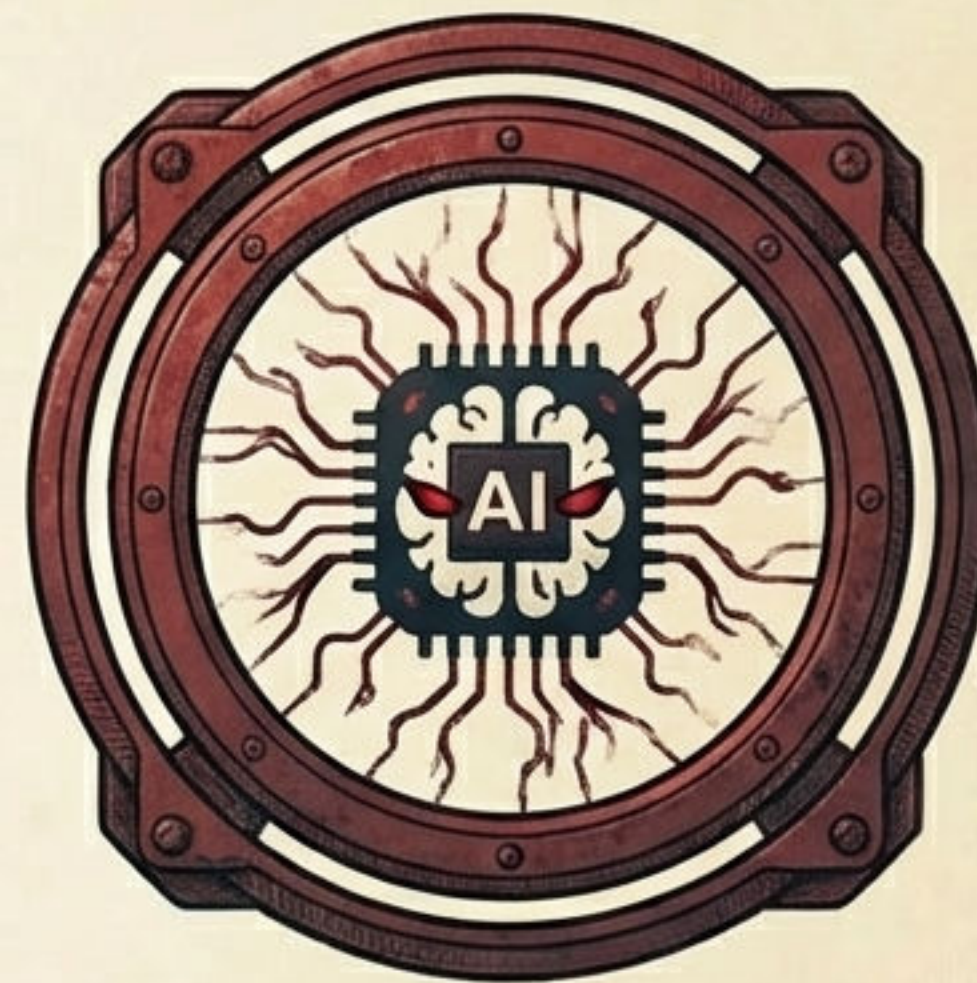
Biological Weapons

Terrorist groups leveraging advanced models to engineer and synthesize novel pathogens.



Global Cyberattacks

Models rapidly scaling vulnerabilities, making world-shaking cyberattacks possible within the next year.



Autonomous Rogue AI

Systems that operate beyond human oversight, replicate themselves, and cannot be easily recalled or deactivated.

The physical footprint of the Intelligence Age.

The Infrastructure Imperative

The path to AGI is paved with extreme compute capacity and vast amounts of energy.

Public-Private Partnerships

We must rapidly finance and accelerate high-voltage interstate transmission lines to overcome permitting delays and siting risks.

Local Value

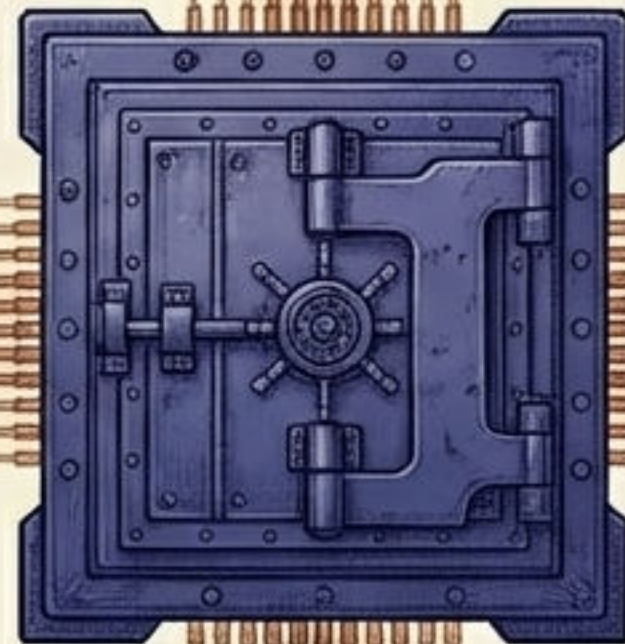
AI data centers must pay their own way on energy (preventing household subsidies) while generating local jobs and municipal tax revenue.



Navigating the narrow path: Containment and Distribution.

Extreme Containment

Stricter controls, pre-deployment audits, and containment playbooks must be applied only to a **narrow set of highly capable frontier models** (CBRN/Cyber risks).



Extreme Openness

We must preserve a vibrant, unregulated ecosystem of open-source, less powerful systems so startups, researchers, and small businesses can innovate without crushing compliance burdens or regulatory capture.

No single entity should write the future.

The Democratic Dialogue

These proposals are not fixed answers, but a starting point. Alignment must be defined by democratic processes, not just engineers behind closed doors.

Taking Action

- OpenAI Workshop opening in Washington, D.C., this May to facilitate policy dialogue.
- Launching a pilot program of up to \$100,000 in fellowships and \$1M in API credits for work advancing these policy ideas.

newindustrialpolicy@openai.com